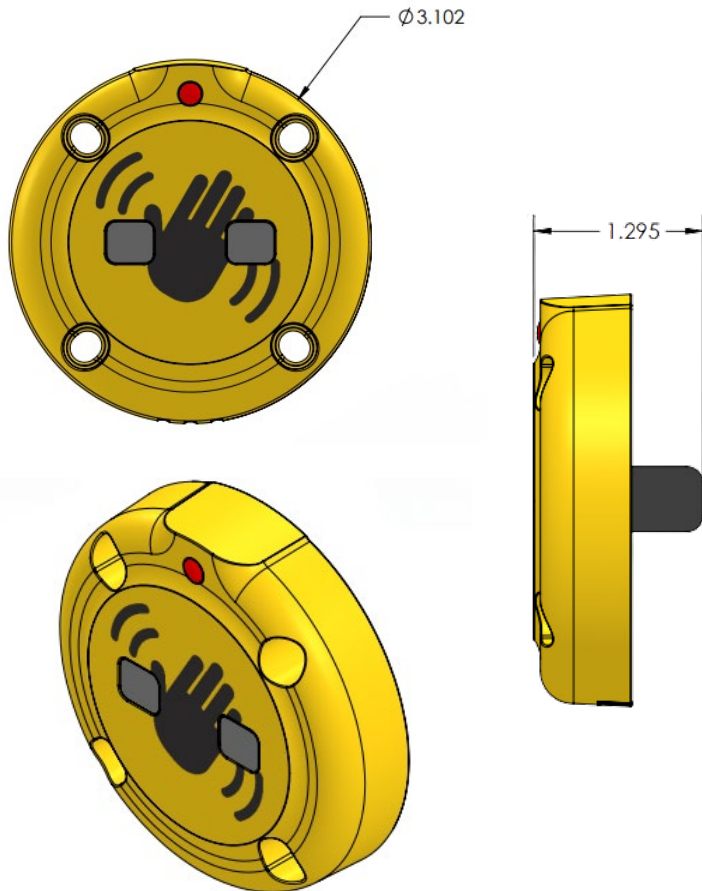




4EVR® MOAB Wave



4EVR® MOAB Wave round yellow option
pictured

The **4EVR® MOAB Wave** is a fully touchless pedestrian push button. It is extremely robust and crafted from solid aluminum stock rendering it both vandal and impact-resistant.

A call is detected by an active infrared sensor as infrared light precisely reflects off the hand, ensuring calls are initiated only when intended. The **4EVR® MOAB Wave's** touchless technology operates flawlessly in all weather conditions, including rain, hail, and snow allowing for assurance when placing a call. The wave of a hand within a 1-6" range of the sensor triggers a momentary LED indicator and an audible (dee-dah) tone, initiating a pedestrian call.

Specifications:

Idle Current: 0.0282mA typical
Clock Calibration Current: 3mA typical
Operating Voltage DC: 12-36 VDC
Operating Voltage AC: 12-24 VAC

Feedback:

Visual: LED Super Bright Red (Luminous Intensity: 5000 mcd)
Audible: Dee 3900 Hz – Dah 3600 Hz

LED Operating Modes:

Momentary: LED on for 0.025 seconds to correspond with audible beep and circuit closure.
Latching: LED activates only during non-walk phases and extinguishes at the beginning of the walk phase.

Isolator Card Requirement:

To ensure consistent performance of the active infrared sensor over time, the **4EVR® MOAB Wave** must periodically calibrate its internal timer. Although its idle current is very low, the current draw during timer calibration is high enough to place a call on most cabinet FT lines. To ensure operation free from false calls, we recommend the **4EVR® MOAB Wave** be paired with a **PBI-C** or **PBI-L** push button interface.



Operating Specifications

Parameter	Rating
Operating Temperature Range	-34°C to +74°C -30 °F to +165°F
Maximum Volume	80 dB @ 1 meter

Design Compliance

Test Type	Compliance
Functionality	MUTCD 2009 - 4E
Temperature and Humidity	NEMA TS2
Transient Voltage Protection	NEMA TS2
Mechanical Shock and Vibration	NEMA TS2
MOAB PBS enclosure	NEMA 250 – Type 4X

Please specify part number:

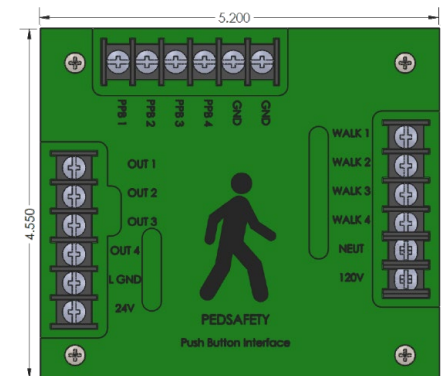
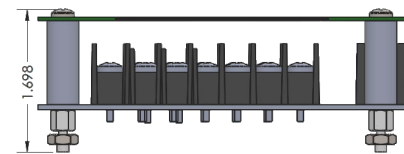
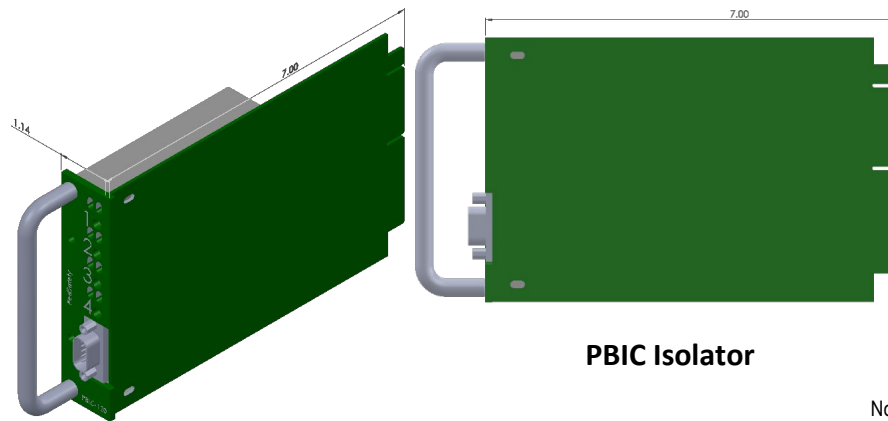
MOAB Wave	502-2080
-----------	----------

Latching Interfaces:

PBI-L (wall mount)	501-0010
PBIC-24 (card rack mount)	501-0005C

Please specify the following attributes:

1. Color	2. Screw Type
Textured Black	Standard Phillips
Federal Yellow	Pinned Torx (T)
Green	
Unpainted/Natural	



Notes:

- Applicable sections only of referenced standards
- All specifications are subject to change without notice
- All specifications are typical unless otherwise specified